

Prospectus

2024/25

Why BRIT?



"I am so grateful that my son goes to such a special school. Since being here he has totally thrived and it is amazing to watch the transformation in him. "

Melissa, Events Manager for Parents Executive Committee.

97%

agree/ strongly agree
that their child is happy at The BRIT School

98%

agree/ strongly agree
that their child feels safe at The BRIT School

97%

would recommend The BRIT School
to another parent

Welcome

The BRIT School is free to attend. You can be yourself. And you will achieve great things at this extraordinary school.

We believe in creativity and that young people of all backgrounds should be able to develop their creative talent and craft and make a powerful contribution to society. The world needs creativity and the creative industries more than ever before; digital solutions, imaginative ideas, art, entertainment. It needs polymaths who value science, history, maths and art all at the same time. It needs original, responsible and ambitious young people - like you - to make the world work. And it needs a more inclusive society where everyone matters and being yourself is celebrated.

For over 30 years, The BRIT School has successfully nurtured creative skills in students from every type of background, alongside providing a robust and full academic curriculum to be the person they want to be. If you choose to come here, we will give you the tools, skills, knowledge, training and industry opportunities to build a path to your future.

Nearly 100% of all graduating students find work in a huge range of creative industries, or enrol for higher education.

This is a playground with professional boundaries where the raw talent of 14 – 19 year olds is nurtured by experienced world-class teachers. There are five qualities we want our students to take on when they come here: originality, responsibility, ambition, inclusivity and kindness. This means you will find your space here to unlock your creative potential, be your own person, be kind and act responsibly to others and yourself, and you will be accepting of the diverse community of artists you will work with every day. You will experience powerful assemblies on mental health, Black History, neurodiversity and LGBTQ+, and participate in fantastic productions and exhibitions.

There are industry standard facilities in our studios, classrooms and theatres thanks to, amongst many, but specifically Andrew Lloyd Webber, Nile Rodgers, The Utey Foundation, YouTube Music, Royal Bank of Canada, Netflix, Tim Cook at Apple and the Arts Council, all who have worked to support this School. We have an impressive Board of Trustees and an active BRIT Parent Community.

Parents and carers - your child will be happy here, they will learn to be who they are, with skills and kindness. You will see for yourselves their work on show and you too will be welcomed as part of the BRIT Community. This is a hardworking, fun, passionate school packed with dedicated individuals who love the creative and performing arts and recognise the importance of a thorough and robust education in all subjects. We believe in developing well rounded, articulate, kind and dynamic young people and want to encourage you to read this prospectus with excitement and see if this is the right place for you.

We are excited and optimistic about your future.



Stuart Worden, Principal



"There are five qualities we want our students to take on when they come here: originality, responsibility, ambition, inclusivity and kindness."



THE BRIT TRUST

Supporting young people in music and education

“Once again, on behalf of The BRIT Trust, I pay tribute to Stuart Worden and his team who continue to take the level of excellence of the school to new heights, providing critical educational and pastoral support in a diverse, inclusive and safe environment, for its 1,400 students.

Earlier this year, it was remarkable to see the presence and contribution of BRIT students and alumni, both front and backstage -musicians, lighting designers, dancers, technicians - at work during the global music event - The BRIT Awards.

The BRIT School has been rightly recognised for its unique cultural contribution to the UK and like the global Awards show from which its name derives, holds a special place – culturally, socially and economically - in the creative arts’ fabric of the UK.”

Tony Wadsworth CBE
CHAIR OF THE BRIT TRUST



The
BRIT
SCHOOL

BRIT
KIDS

BRIT
OF
BUSINESS

BRIT
AWARDS
mastercard

BRITs
APPRENTICE
SCHEME

CLASSIC
BRIT
AWARDS

For further information about the initiatives with which
The BRIT School shares its name, please visit www.brittrust.co.uk

Contents

Applying to The BRIT School	4
Frequently Asked Questions	5
Admissions Procedure	6
Additional Educational Needs at The BRIT School	7
Our Curriculum at Key Stage 4 & Post 16	8-9
Your Career Starts Here	10-11
Studying Creative & Performing Arts	13
BRIT Life & Peripatetic Classes	14-15
Our Courses	
Film & Media Production	18-19
Interactive Digital Design	20-21
Production Arts	22-23
Visual Arts & Design & Fashion, Styling & Textiles	24-25
Applied Theatre	28-29
Dance	30-31
Music & Music Technology	32-33
Musical Theatre	34-35
Theatre	36-37
Admissions Policy & Procedure	38-43
Thank You	44-45



Applying to The BRIT School

We have two intakes
Key Stage 4 (aged 14-16)
and Post 16 (aged 16-18)

Year 10 Applications

If you wish to apply for Year 10 at The BRIT School, you should start this process when you commence Year 9 at your current school. **Applications will be open from 1st August 2023 until 8th January 2024.**

Post 16 Applications

If you wish to apply for Year 12 at The BRIT School you should start this process when you commence Year 11 at your current school. **Applications will be open from 1st August 2023.** Please see p.6 for the specific closing dates for Performing Arts and Creative Arts strands as they have different deadlines.

**Fill in the online application form
(note we no longer accept paper applications):**

brit.croydon.sch.uk/apply

Applicants can only apply for one strand.

If you wish to change strand, you should send an email to **studentservices@brit.croydon.sch.uk** cancelling the original application; the email should contain your name and the Strand you originally applied for as well as any reference number you may have. You will then have to begin the application process again. If the new application is received after the relevant deadline it will be treated as a late application.

Application deadlines

If you are applying for Key Stage 4 you need to make sure you apply by **8th January 2024**, and if you are applying for Post 16 the deadline is dependent on which course you are applying for. The closing date for Dance, Music and Music Technology, Musical Theatre and Theatre courses is **13th November 2023**. We give additional time to the following courses in order that portfolios may be prepared. For Applied Theatre, Film & Media Production, Interactive Digital Design, Production Arts and Visual Arts and Design/ Fashion, Styling & Textiles courses the closing date is **22nd January 2024**. Any applications received after this date will go onto our waiting list.

Applying if I am Neurodiverse and/or have Additional Educational Needs

We have a diverse student body, and welcome applications from students with Additional Educational Needs (AEN), including Neurodiversity. Our AEN Department provides support for students with a range of additional needs, assisting them in fulfilling the course requirements and their potential while at the School. If a student with Additional Educational Needs and/or Neurodiversity is granted a place, the AEN Department will make contact prior to their admission in order to begin the process of working together with parents/carers and students.

The BRIT School fully supports and adheres to the Equalities Act 2010 in making reasonable adjustments to support SEND students. Please see p.7 on applying with AEN and/or Neurodiversity.

Documents you will need to apply

Key Stage 4 students will need to supply a copy of their Year 8 report, Post 16 students will need a copy of their Year 10 report. All reports must contain attendance. At some point during the application process you will be required to supply your passport (to be copied) and a copy of a utility bill which should show the address where you were living at the time of application. Once we have completed our checking procedure the digital file will be permanently deleted. If you indicate on the application form that you have an EHCP you will be unable to complete and submit your application without attaching a copy of the document.

Catchment Area

We accept students from most of Greater London, and some parts of Kent and Surrey. Catchment postcodes are on p.42 or visit www.brit.croydon.sch.uk for a full list. We are allowed to take 10% of applicants from outside this area, but only if you show exceptional merit throughout each stage of the application process. We take proof of your address to show you are in catchment at the point of application, not the address you may move to if you are offered a place.

We do have a list of local residents who offer rooms to be let, but parents/carers must take responsibility for the accommodation being satisfactory and make sure that the day-to-day support for the student is in place. This applies to Post 16 students only as we will not accept applications for Key Stage 4 if the applicant will need to live independently. Please note The BRIT School does not vet these landlords.



FAQs

Overseas Applications

We will not accept Key Stage 4 students if their parents intend to remain abroad. Please see p.41 for more details for non UK residents.

Do I have to pay?

It is free to attend The BRIT School. Limits on the School's budget mean that we do need to charge for certain activities, such as non-curriculum visits and peripatetic music and dance tuition. In some subjects, students will also need to provide their own specialist professional equipment; each course's individual documentation provides guidance.

Can I get financial support?

We have limited funds for bursary grants to support free school meals, school trips and peripatetic lessons. This support is available where the main family income comes from Job Seeker's Allowance, Income Support, Employment and Support Allowance, Widowed Parent's Allowance, Incapacity Benefit or a State Pension. We will also consider bursary applications from students with a low family income. Full details are available on our website and a copy of the Charging and Remissions Policy is available on request.

What to consider when I apply

Please read the Admissions Policy found on p.38 carefully before making an application as this will explain the practical requirements and admission criteria.

All completed applications received on time will be reviewed against the criteria in section 1B(i) on p.38. If the application is successful, students will be invited to a workshop/meeting. Workshops will be held from December to April. Please note we cannot change the date offered. We are only able to try and change meeting dates for Public Exams (not mocks) and for hospital appointments. (See p.40 section 2B for the policy).

Due to the high volume of applicants that attend these meetings we ask that you are accompanied only by your parent(s)/carer(s). The parent(s)/carer(s) of Post 16 applicants do not have to attend the meeting if they do not wish to. It is mandatory for Key Stage 4 applicants to be accompanied by their parent(s)/carer(s) in order for the meeting to take place. Parents can only attend the meeting and NOT the workshop.

When and how will I find out?

We will endeavour to communicate decisions within four weeks of your workshop/meeting date. All decisions will be communicated via email. You will not receive any information by letter or telephone.

Please ensure that all email addresses provided are correct as we use this method to communicate with you. Please ensure you check your junk and spam boxes and make @brit.croydon.sch.uk and @applicaa.com a safe sender.

All responses are sent within our published time criteria and the School cannot therefore accept responsibility for any workshops or meetings that are missed due to either incorrect contact information supplied by the applicant or where our correspondence has not been read by the applicant/parent within the published time criteria.

If your application is not successful

You cannot apply for another Strand unless you are specifically recommended by The BRIT School in writing and you are not in the process of appealing a decision made by the Strand you originally applied for.

Applicants who are already studying at Year 12 can apply to us but they will have to re-sit Year 12 again. However, if at your current school you are already studying the UAL award we offer we are unable to accept your application. You cannot be 18 years of age at the start of the course. You should submit a Year 11 report alongside your application.

Visiting The BRIT School

Due to busy timetables we are unable to facilitate visits at any other time of the year outside of the two Open Events on site in the Autumn. However you are welcome to come to any public ticketed events as advertised on linktr.ee/britboxoffice

All of our Strand and Curriculum Films can be viewed on [youtube.com/BRITSchoolFilms](https://www.youtube.com/BRITSchoolFilms)

Open Event details will be posted on www.brit.croydon.sch.uk/openevents and on social media @thebritschool

Application Process

Below is a check list for applying to The BRIT School, we recommend you:

- 1. Read the prospectus for criteria and curriculum offer
- 2. Come to an Open Event in the Autumn for the key stage you wish to apply for
- 3. Apply for the Strand online reading carefully the course information and questions.

UK or EEA National Check list for applying

The Schools authorised catchment area is most of Greater London and some parts of the Kent and Surrey catchment area.

We regret we are unable to accept applications from prospective Post 16 students residing in Scotland, Wales, Northern Ireland, The Isle of Man and The Channel Islands

- Register for one of our Open Events online at brit.croydon.sch.uk

Post 16 Open Event
Thursday 28th September 2023

Key Stage 4 Open Event
Wednesday 18th October 2023

Times and registration details will be published on our website.

- Choose which creative course you would like to apply for.
You can only apply for one course.

Applying online:

You can apply at brit.croydon.sch.uk/apply from **1st August 2023** and you will receive an automatic email confirmation of receipt. Online applications submitted before this date will not be processed. You will be asked to supply:

- A passport sized photograph
- A copy of full Year 8 or Year 10 report, Year 11 if applying to resit Year 12. The report must contain a record of your attendance.
- Tell us if you have an Education Health and Care Plan (EHCP) and attach a copy as indicated in your application

Non UK resident Check list for applying

Please see p.41 of our prospectus for more details for non UK residents.

- Register for one of our Open Events online at brit.croydon.sch.uk

Post 16 Open Event
Thursday 28th September 2023

Key Stage 4 Open Event
Wednesday 18th October 2023

Times and registration details will be published on our website.

- Choose which creative course you would like to apply for.
You can only apply for one course.

Applying online:

You can apply at brit.croydon.sch.uk/apply from **1st August 2023** and you will receive an automatic email confirmation of receipt. Online applications submitted before this date will not be processed. You will be asked to supply:

- A passport sized photograph
- A report: where school reports are not in English, please provide an English translation in addition to a copy of the original report. The report must contain a record of your attendance.
- Tell us if you have an Education Health and Care Plan (EHCP) and attach a copy as indicated in your application

Catchment area and out of area applications

Please visit p.42 for full postcodes. In addition, the School can accept a maximum of 10% of the intake from outside the catchment area, where exceptional merit is shown.

Year Applying For	Course	Closing Date
Year 12 (Post 16) Performing Arts	Dance, Musical Theatre, Music & Music Technology, Theatre	13 Nov 2023
Year 12 (Post 16) Creative Arts & Applied Theatre	Applied Theatre, Film & Media Production, Interactive Digital Design, Production Arts, Visual Arts & Design/Fashion Styling & Textiles	22 Jan 2024
Year 10 (Key Stage 4)	All courses	8 Jan 2024

Apply online brit.croydon.sch.uk/apply

Additional Educational Needs



AEN Vision

The AEN Department are dedicated to the students it supports, taking a holistic approach to their wellbeing and success. They are an essential part of BRIT, offering specialist provision which recognises and celebrates our students' talents and skills. The team has created a space which is safe and inclusive, where all our AEN students can feel secure in themselves, and in their potential.

AEN and Admissions

We look forward to receiving applications from candidates with AEN needs. Please make sure you do the following:

- Tick the AEN box on the application form
- Give as much detail as possible about your AEN and how it affects you
- Tell us if you have an Education Health and Care Plan (EHCP) and attach a copy as indicated in your application
- Tell us if you have access arrangements/ exam concessions

Sharing this information will help us provide appropriate support through the Admissions process to ensure that your AEN does not disadvantage you. You must, however, still meet the strand requirements as per the Admissions Policy. We abide by, and fully support, the Equalities Act of 2010.

AEN Support at BRIT

- We adapt our support to meet the individual needs of applicants.
- We support students with needs across all areas:
 - Cognition and Learning
 - Communication and Interaction
 - Social Emotional and Mental Health
 - Physical and Sensory Needs

The first line of support is Quality First Teaching from teaching staff. This is supplemented by a range of support from the AEN Team as needed. This could include the following:

- Whole class LSA support
- Small group sessions
- 1:1 sessions
- Intensive English and Maths support
- Assistive Technology
- Referrals to external services

We also have a range of specialised staff who work across the school:

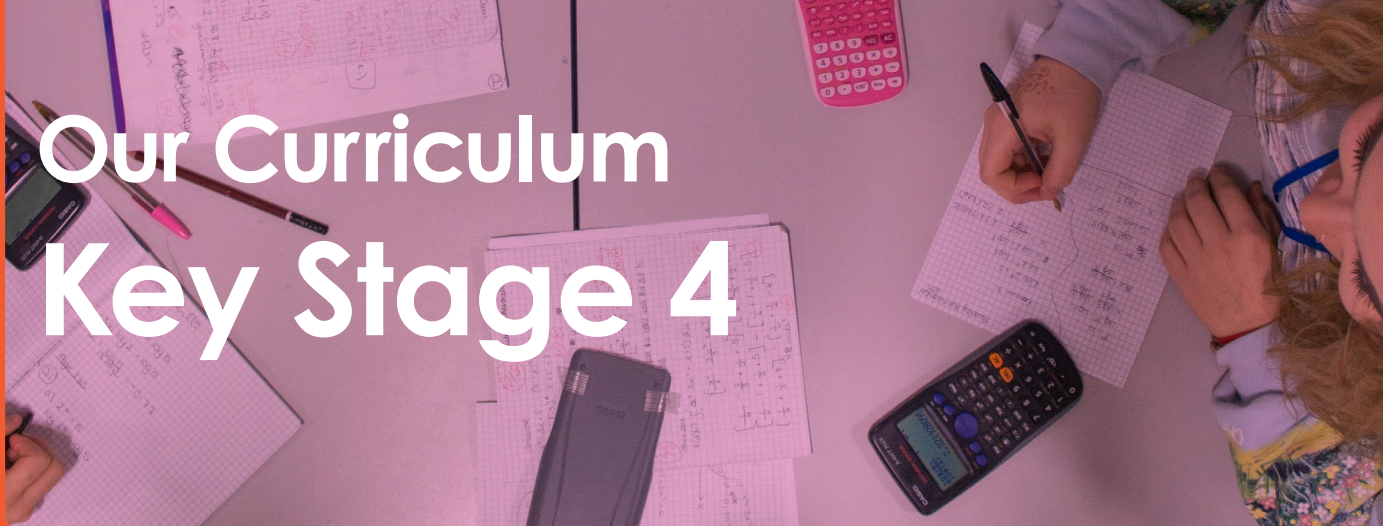
- Key Stage 4 Transition and Progression LSA
- Post-16 Transition and Progression LSA
- EHCP LSA
- Social Emotional and Mental Health LSA
- Emotional Literacy Support Assistant

Want to know more...?

Visit brit.croydon.sch.uk/aen

Feel free to contact the department with pre/post application questions: aen@brit.croydon.sch.uk

Follow us on Instagram: [@brit_aengers](https://www.instagram.com/brit_aengers)



Our Curriculum Key Stage 4

The Key Stage 4 Study Programme is made up of three parts:

1. Strand

This is the specialist creative area you have chosen to study at The BRIT School. Five hours a week is dedicated to the Strand time and there are additional activities, rehearsals, workshops, events and performances that make up the unique BRIT educational experience.

Strand Subjects at KS4, equivalent to one GCSE.

- Film & Media Production
- Dance
- Interactive Digital Design
- Music
- Musical Theatre
- Theatre
- Visual Arts & Design

2. Your Core Curriculum

The BRIT School is committed to providing a broad and balanced education that values the essential knowledge, skills and understanding within National Curriculum subjects.

Key Stage 4 Student Study Programme

The four parts make up the students' whole Study Programme at The BRIT School.

Core Curriculum	Subject
	English Language (1 GCSE) English Literature (1 GCSE)
	Mathematics (1 GCSE)
	Combined Science (2 GCSE's or equivalent)
	Personal Professional Development - PPD (not examined)

3. Your Options

You will select your preferences from the three Option Blocks.

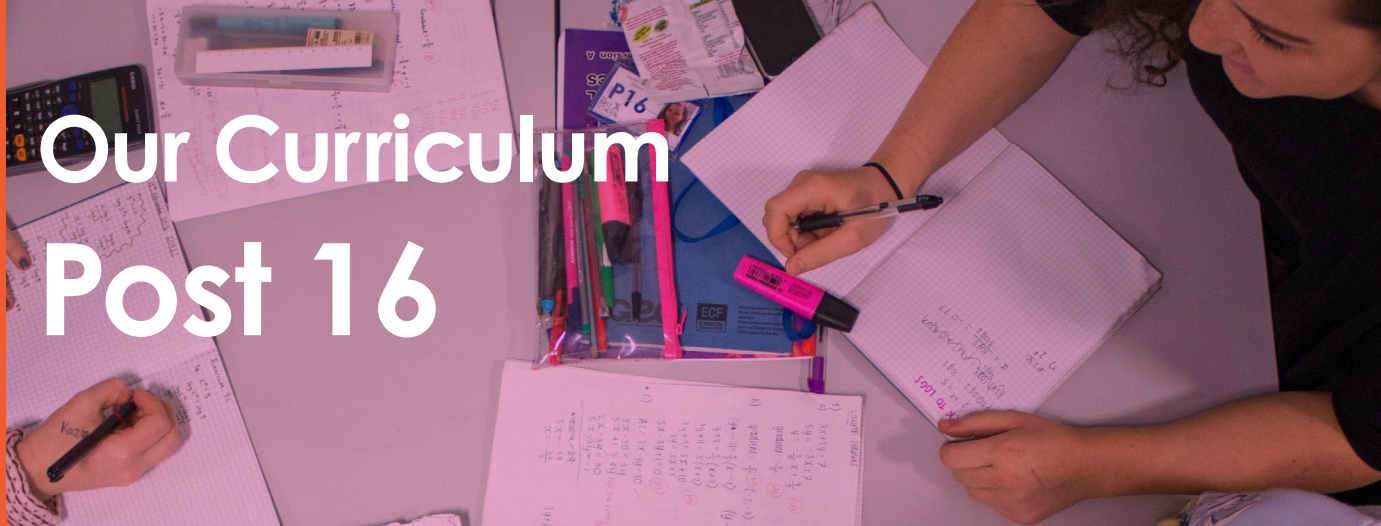
Block A		Block B		Block C	
Pref 1-3	Subject	Pref 1-3	Subject	Pref 1-3	Subject
	Dance		Art & Design		Dance
	Drama		Film		Drama
	Film		French		History
	Graphic Design (Technical Award)		History		Music
	History		Photography		Separate Sciences
	Music Tech (Technical Award)		Sociology		Sociology
	Sociology		Textiles		Spanish
	Spanish		Business		Business
	Business				

Upskiller English

The Upskiller English course will provide students with additional provision, preparation and further skills to support the very best outcomes for students in GCSE English Language and GCSE English Literature.

Strand + Core Curriculum + Options + Tutor Time	Total hours per week = 26.5
---	-----------------------------

Please note that at Key Stage 4 and Post 16, qualifications stated are correct at the time of printing.



Study Programmes

A Study Programme is what makes up a student's learning experience whilst at an educational institution. For all of our students at The BRIT School, this will primarily be taken up by time spent on their chosen Strand.

Students must be aware that when they commit to a Study Programme they are committing to The BRIT School's expectation of 96% or higher for attendance across all subjects.

Study Programme 1

All Post 16 provision must ensure that all students have either achieved or are working towards achieving at least a grade 4 in both GCSE Maths and either English Language or Literature. In order to study at The BRIT School, it is mandatory that if a student has failed to achieve a grade 4 in Maths and/or English they will be automatically placed on Study Programme 1. This will mean spending 15 hours per week on their Strand and up to an additional 2 hours on Maths and/or English GCSE pathways.

Study Programme 2

Our students will have applied to The BRIT School in order to focus on their Strand. This institution is hugely demanding on a student due to the high levels of expectation placed upon them and for many of our students, the recommendation will be to study purely their Strand e.g. Study Programme 2.

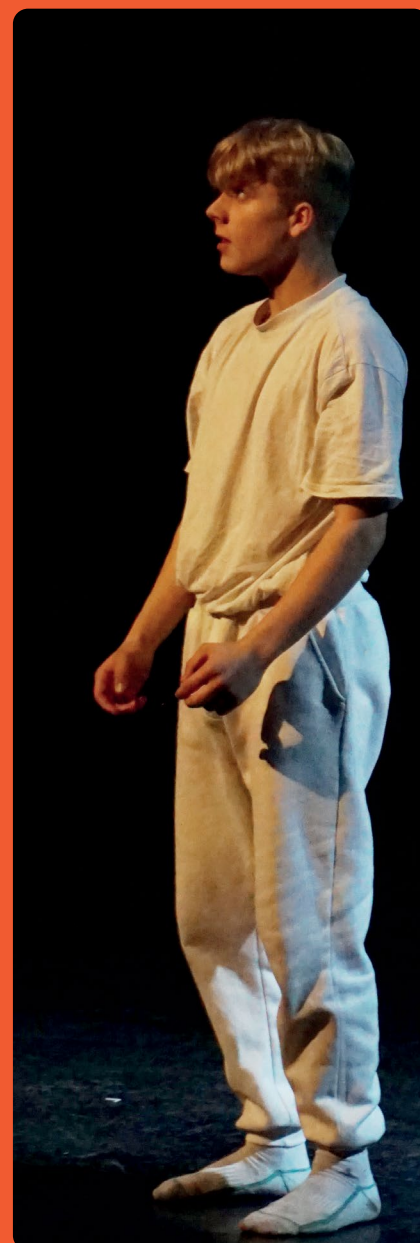
Some of our students would like to further their knowledge of another area or simply support their breadth of knowledge. For these students they must carefully consider the type of course that they wish to study; its relevance to their chosen career path; the impact that this may have on their Strand and the application and dedication that will be required to complete a fourth qualification. Subject to availability and suitability, they can select from Study Programmes 3 or 4.

Study Programme 3

Study Programme 3 is made up of 15 hours per week dedicated to your Strand and a further 5 hours per week dedicated to an AS subject/pathway. Whilst the Strand will cover two years of study, the AS will be completed in one year. There is also an expectation for all AS subjects that students spend an additional 5 hours per week on independent study for their pathways subject. Some subjects may require a portfolio or evidence of work on the induction day.

Study Programme 4

In exceptional cases, students may wish to follow Study Programme 4. This is made up of 15 hours per week dedicated to your Strand and a further 5 hours per week dedicated to an A level subject/pathway. Both courses will be completed over a two-year period. There is also an expectation for all A level subjects, that students also spend a minimum of 5 hours per week on independent study for their pathways subject.



Your Career Starts Here

Our dedicated Careers Team offers a suite of activities and individual support to students during their time at BRIT providing knowledge, guidance and information to widen their access to career options and progression into HE, FE, further training, employment and apprenticeships.

You will experience:

1. Events

Interview Practice Days, Careers Days, Careers Fairs and BRIT Talks from a diverse range of industry professionals including Cush Jumbo OBE, Raye, Mo Gilligan and Pete Tong.

2. Work placements

in a creative industry related field.

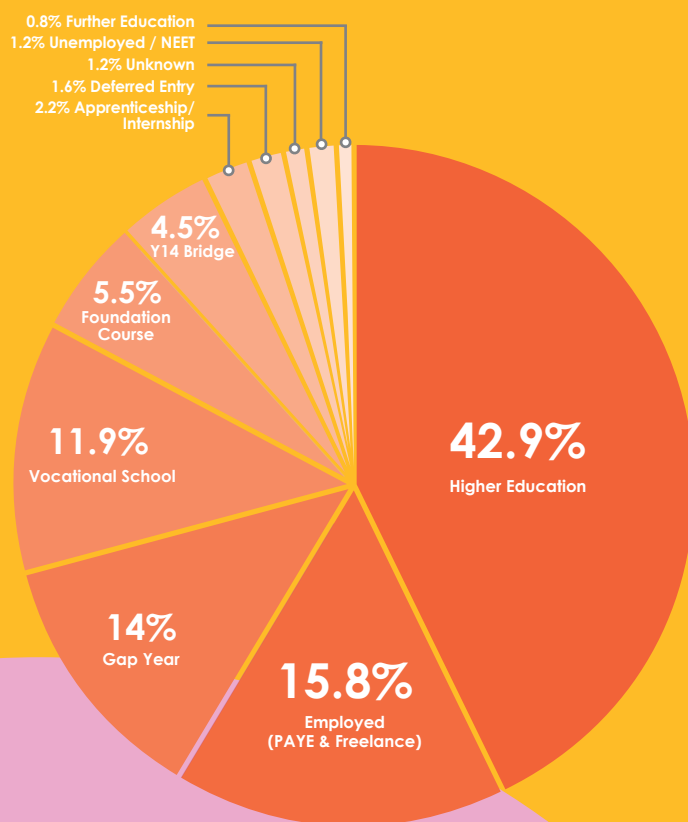
3. Long-term employability skills to support creative careers.

Students will learn and embed in their own practice the characteristics needed to be successful in the creative and performing arts industries. They will understand the importance of these key transferable skills in their future career development.

They will gain these skills from:

- Lessons
- Projects/live briefs
- BRIT Talks: Guest speakers, Q&As & Masterclasses
- Events
- Learning from career and labour market information
- Linking curriculum learning to careers
- Encounters with employers and employees
- Experiences/visits to workplaces
- Encounters with further and higher education
- Independent advice and guidance

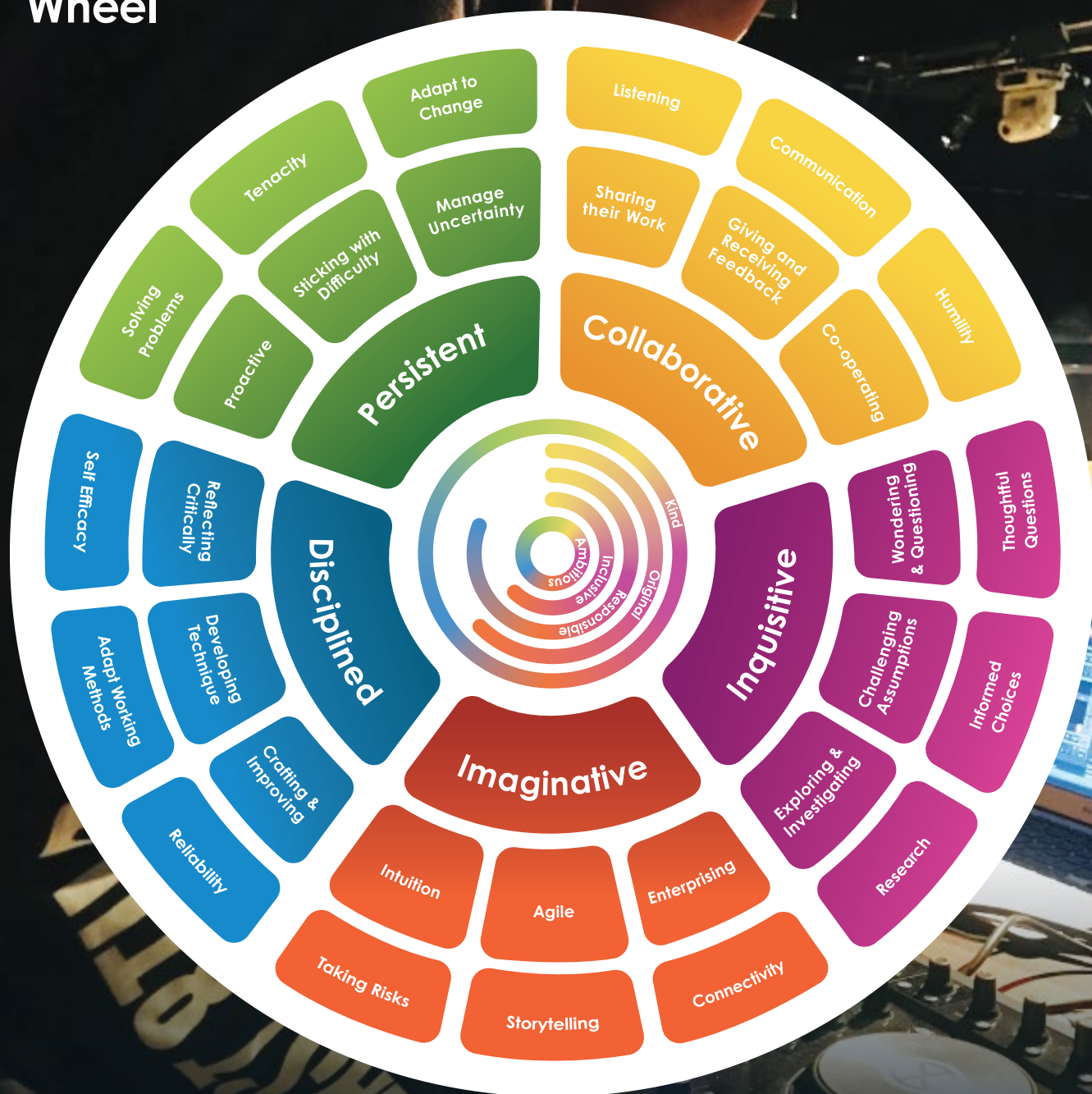
Destinations of BRIT students leaving in 2022



“It is a very professional school with a really high standard of teachers. This is good as I feel that I can get the most out of school and find the right next step for me in my career.”

Student Survey 2022

BRIT Characteristics Wheel

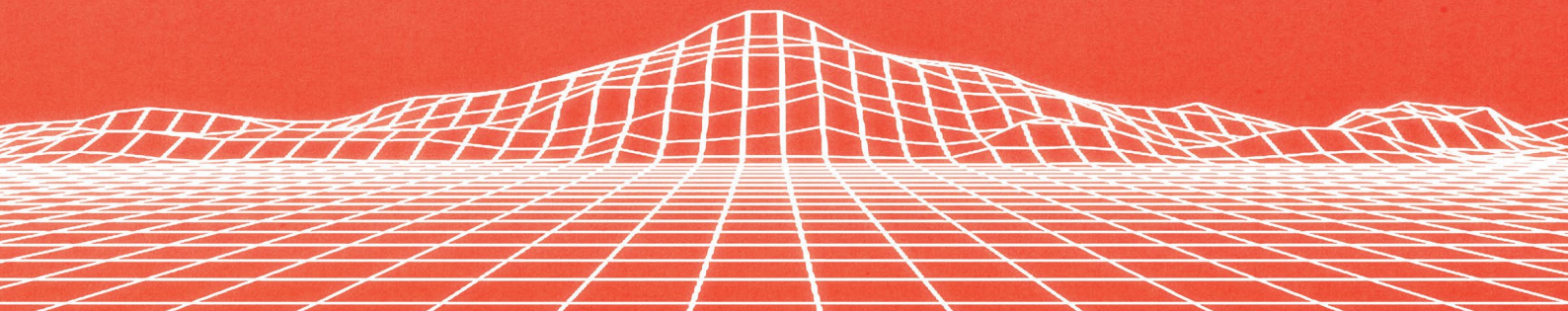


“What makes The BRIT School special is the vast facilities, positive creative environment, artistic mindset, practical courses, industry contacts, reputation and overwhelmingly accepting student body.”

**WE'RE PROUD TO SUPPORT
THE BRIT SCHOOL
AND ALL EMERGING CREATIVE TALENT**



SONY MUSIC



Studying Creative & Performing Arts



Why study Creative Arts?

Film & Media Production
Interactive Digital Design
Production Arts
Visual Arts & Design/
Fashion, Styling & Textiles

The confidence and creativity gained from studying creative subjects play a key role in developing the skills all employers crave:

- Problem-solving
- Generating ideas
- Teamwork
- Higher level of well-being
- Thinking outside the box
- Professionalism
- Motivation

BRIT Graduates can be found working at Apple, Framestore, PRG, Britannia Row, Royal Albert Hall, Facebook, ITV, BBC, Warner Music, ASOS, Sony, TikTok, Burberry as well as running their own businesses across the globe effecting change and bringing their unique perspective to the workplace.

Why study Performing Arts?

Applied Theatre
Dance
Music & Music Technology
Musical Theatre
Theatre

Training in the performing arts develops:

- Confidence
- Team working
- Problem-solving
- Motivation
- Self-esteem
- Emotional and social skills
- Management of relationships
- Resilience
- Professionalism

BRIT Graduates go on to train at the top performing arts institutions across the country and further afield in institutions including: Bird College, Guildhall, LAMDA, RADA, Mountview, Rose Bruford, Royal Welsh College of Music & Drama, Leeds College of Music.

BRIT Life



Masterclass with BRIT Awards designer Slawn, 2023

Facilities

Our facilities are vital to what makes us one of the leading arts school and to offer a professional experience. We have fully equipped theatres, dance studios, a scenic construction workshop and paint frame. For our designers, filmmakers and artists we have Apple Mac suites, YouTube Music TV studio and gallery, print workshop and photography dark room, 3D printer and laser cutter and Make up and props workshop. For musicians and young producers we have the Sir George Martin Recording studios and Nile Rodgers Music Suite of practice rooms. The Library is at the heart of the school with a full archive and professionally trained librarians to help you with your research and studies

Opportunities

You can join in many student groups, clubs and forums at BRIT. The student voice is strong here and you can participate in assemblies including Black History, Neurodiversity and LGBTQ+ as well as a vast array of student led activities, including Global Majority celebrations, the annual Drag Show and the Ethics, Beliefs and Culture Festival.

From marching at Pride and working on a community project to sharing your art on a global online platform BRIT Now, and joining in World Book Day and Black History Month, students are actively encouraged to participate in all aspects of BRIT Life.

Follow on Instagram:
[@BRIT_Library_](#)
[@BRITPastoralCare](#)

'The BRIT School has many clubs that make people feel comfortable and empowered with who they are. Peri lessons (extra lessons) are offered to students meaning that they can learn an instrument or improve on skills such as dancing and singing. People are kind and caring at the school (including teachers) and strive for students to work hard and succeed to the best of their ability, in their Art and GCSE subjects.'

Student Survey 2022



Peripatetic Classes

ring the
ative to
RIT Sch
SS



nord stage2

Peripatetic Classes

The BRIT School provides facilities for students to enrol for private instrumental, voice, theory or technology lessons with highly skilled and industry experienced professional music teachers. These lessons take place during the normal school day and a full course consists of 27 lessons. There is an annual fee for peripatetic lessons. Some bursaries are available to assist with the cost, provided through The Utley Foundation. Courses are available in voice, guitar (electric/acoustic/classical), bass guitar, drums, piano, saxophone, flute, clarinet, music technology, music theory, songwriting and Music Industry Mentoring. All information and teachers' biographies can be found at

www.brit.croydon.sch.uk/peri

The Peripatetic Dance Programme offers all students the opportunity to take ISTD examination classes in Modern & Tap from Intermediate to Advanced 2 level as well as a host of Open Classes for students to access from Conditioning to Ballet, Hip Hop, Commercial and Lyrical Jazz. There is an annual fee for peripatetic lessons. We are able to offer a number of scholarships, those selected will become a Leverhulme Arts Scholar for the year. The BRIT School characteristics and Equality, Diversity & Inclusion are at the core of the selection process.

Bursaries made possible thanks to

UF
THE UTLEY
FOUNDATION

LEVERHULME
TRUST



Khronos Dance Company

Khronos was founded in 2009 by dance teacher Julia Dark initially as an all-male youth dance company. The aim of the company is to provide a creative and performance platform for young males in a safe and encouraging environment. Through performance and outreach work Khronos Agoria aim to break social stereotypes of males in dance offering a positive experience embracing masculinity and athleticism.

The group became semi-finalists of Britain's Got Talent in 2016. In 2018, Khronos Girls was established to provide the same opportunities for our female dancers. They reached the semi-finals of Britain's Got Talent in 2019. The company also runs youth classes at the School for boys and girls aged 8 – 16 years.

 Follow on Instagram:
khronosdance

Be your own music business boss

PRS for Music champions the BRIT School and its culture of creative excellence. When your music is ready for the world, we'll pay you royalties.

Learn how to protect your music, right from the start.

[/prsformusic](#)

PRS
for MUSIC



WARNER
MUSIC
UK

CONTINUING
AS PROUD
SPONSORS
OF THE BRIT
SCHOOL



WARNER
CLASSICS



Film & Media Production

Accredited by
 ScreenSkills
Select

CREATIVE ARTS COURSE



Course Overview

At The BRIT School we are passionate about all things media. The quality of British film, TV and radio production is highly regarded worldwide and they make a key contribution to the UK economy whilst at the same time adding to this country's cultural richness. Within these industries there is a wide range of potential careers, from the creative, to the technical, and potential management roles. The skills that you will learn on our courses will prepare you for your first steps in an exciting and vibrant sector.

Student Experience

The UAL Extended Diploma Creative Media Production course has been designed to reflect both the film and broadcast industries. Using industry standard hardware, including a range of cameras and our own Radio and TV Studio (sponsored by YouTube Music), you will complete a wide range of industry-related projects, including music videos, short films, documentaries, and advertisements. Alongside this you will collaborate on live broadcasts covering both TV and radio. Underpinning these practical projects are more theory-based assignments that cover subjects such as scriptwriting, film studies and industry related topics. Our students have undertaken placements on a range of productions, from feature films, to advertisements and radio.

You'll have the opportunity to contribute to a number of exciting projects covering filmmaking and live broadcast. Every year, working as part of a crew, our students travel to a secret location for four days to shoot short films. BRIT Live is the department's very own magazine style show that is broadcast monthly via YouTube. We celebrate the success of all of our students through the department's annual award showcase held at BFI Southbank.

What Qualities do I need?

We are interested in students who possess and can demonstrate a passion in at least one area of media, whether it is the adrenaline rush of live broadcast or the painstaking process of crafting a film or documentary. It is essential that you are enthusiastic and can demonstrate both commitment and the ability to work as part of a team. If you are applying to join the Post 16 course you will need to bring a portfolio or showreel to the interview that showcases your dedication and experience in at least one area of media.

Typical Careers

Producer (Film, TV or Radio)
Director (Film or TV)
Broadcast Journalist (TV or Radio)
Camera Operator (Film or TV)
Editor (Film, TV or Radio)
Content Creator (Online)

Our Film and Media Showcase 2023 was supported by EON Productions and Universal Pictures.

EON
PRODUCTIONS

UNIVERSAL
A COMCAST COMPANY

Key Stage 4 Course Information Film & Media Production

What Will I Study?

You will study for a **BTEC Level 2 Tech Award in Creative Media Production, equivalent to GCSE 9-4**. The core area of study will be in filmmaking, with some additional work in radio and photography.

How Do I Apply?

These are the questions you need to answer when you apply online:

- Describe yourself in a tweet (280 characters).
- Write about a time when you felt like a superhero.
- If you could be taught by someone related to this subject who would it be and why?
- What media-related activities have you been involved with? For instance, you may be a keen photographer, filmmaker, scriptwriter, or have experience with live broadcasting.

Accredited by



Film and Media at The BRIT School is a ScreenSkills Select course. Being awarded this accreditation and receiving industry backing is a reflection of the quality of teaching and learning within the department and also credible proof that Film and Media at The BRIT School prepare you for entry into the industry from age 18.



Post 16 Course Information Film & Media Production

What Will I Study?

At the end of your study you will have gained the **UAL, Level 3, Extended Diploma in Creative Media Production and Technology**. It is the **equivalent of three A Levels** and can be translated into UCAS points for easy application to universities.

A wide range of media skills will be taught on this course, concentrating mostly on film and television, with some parts of the course focused on photography and radio.

How Do I Apply?

These are the questions you need to answer when you apply online:

- Describe yourself in a tweet (280 characters).
- Write about a time when you felt like a superhero.
- If you could be taught by someone related to this subject who would it be and why?
- What media-related activities have you been involved with? For instance, you may be a keen photographer, filmmaker, scriptwriter, or have experience with live broadcasting.



Interactive Digital Design

CREATIVE ARTS COURSE



Course Overview

We are offering an innovative and exciting Interactive Digital Design course that will allow students to explore a range of new technologies and practices in design that are relevant to the pace of technological change. The Interactive Digital Design course introduces students to the design and study of graphic design, animation, UX design, 3D modelling, games design and photo manipulation.

Student Experience

So that you can get the most up to date experience on this course, there are fully equipped iMac design studios with the latest design software including the full Adobe Creative Suite and Autodesk Maya. There are also dedicated Nvidia RTX PC studio for 3D design, rendering, game production and VFX including Unreal Engine. You will also have access to all software at home. Plus, you get to use hardware such as XP drawing tablets, DSLR cameras and green screen equipment.

The Interactive Digital Design course promotes and exploits technology; mobile devices and social media within the teaching and learning environment.

The course includes visits from professional designers, animators, design agencies, games developers and VFX Specialists. We have had talks and workshops from companies such as Apple, Meta, Aardman Animation, Framstore, McCann, The Mill and Escape Studios. We ensure our students are kept up to date with

current design initiatives by attending exhibitions, entering competitions and exhibiting student work in our Interactive Digital Design exhibition.

What Qualities Do I Need?

You should be a young designer who is interested in technology and the creative opportunities it presents. We want students who have ideas, who are interested in design and who are strong at working both independently and collaboratively. You have to be self-motivated and have an enthusiasm to learn. You will have ideally come from a media, ICT, art or design and technology background.

Typical Careers

Animator - 2D or 3D, Visual Effects
Compositor, Games Designer, Illustrator
Web Designer, Graphic Designer

Key Stage 4 Course Information Interactive Digital Design

What Will I Study?

Alongside the specialist software and design sessions, you will study for a **NCFE Level 2 Technical Award in Graphic Design, equivalent to GCSE 9-4**. You will learn about the design and study of graphic design, animation and interactive story telling on this course.

How Do I Apply?

When you apply online, you will need to write a paragraph answering the following questions:

- Why do you think you are suited to studying Interactive Digital Design?
- What experience do you have of using computers, technology and design software?
- How do you think this course will help you in your future career?
- Choose something/someone who inspires you that is related to interactive digital design. Explain how and why you are inspired by it/them.



Post 16 Course Information Interactive Digital Design

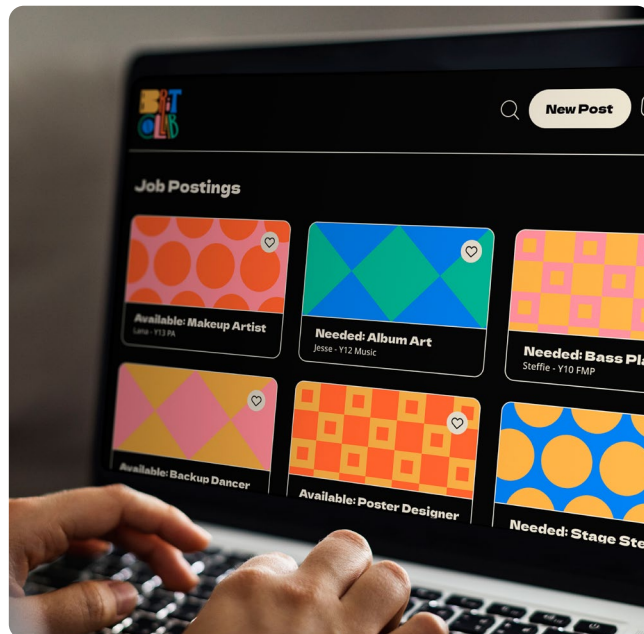
What Will I Study?

In this extended programme of study you will explore a wider range of new technologies related to graphic design, photo manipulation, visual effects, animation, UX/UI design, 3D modelling and animation and games design. You will achieve a **UAL, Level 3, Extended Diploma in Creative Media Production and Technology (Interactive Digital Design)** at the end of your time at The BRIT School that will enable you to move into a variety of different career pathways. Professional practice is a core part of the course, and you will have the opportunity to expand your portfolio through industry relevant work placements. Previous students have attended top London design agencies and big companies including Apple, Google, McCann Central, Microsoft Games and Warner Music for their work experience.

How Do I Apply?

When you apply online, you will need to write a paragraph answering the following questions:

- Tell us about yourself and your experience in Interactive Digital Design.
- Why do you think you are suitable for this course?
- Choose something/someone who inspires you that is related to interactive digital design. Explain how and why you are inspired by it/them.
- If you were to design and create your own interactive media product, what would it be and why?



Production

Arts

Costume Design & Construction,
Set Design & Construction, Scenic Art,
Sound, Lighting & Stage Management

Post 16 only

CREATIVE ARTS COURSE



Course Overview

Only available to those who are joining at aged 16, this course is a stepping stone to a backstage career in the theatre and related industries. You will study a wide range of skills in set design, costume, lighting and sound along with stage and production management. This course will give you the foundation you need to pursue a career in the performing arts industries. Students typically progress into apprenticeships, Higher Education or direct entry into the profession.

The BRIT School offers extensive theatre facilities, giving you the chance to learn and develop a wide range of practical skills. The course is staffed by experienced theatre professionals and much of the learning is delivered through work on fully realised productions. The experience you will gain on this course will prepare you for a career in Production Arts and production design. At the end of the two year course you will achieve a **UAL Level 3 Extended Diploma in Performing & Production Arts, equivalent to three A Levels.**

Student Experience

Every major production put on in the School is managed by the Production Arts department. After developing your skills across all areas you will focus on a specific discipline as you work towards your qualification. The equipment used by the department is industry standard and the department is supported by companies which include PRG XL Video, Britannia Row, Funktion One, Royal Albert Hall, BRIT Awards, The National Theatre, MAC Cosmetics, Martin Professional and TSL.

What Qualities Do I Need?

You will need to be interested in the design and production side of theatre or live events, dedicated, organised and a good timekeeper. A lot of the practical work you do will take place on productions outside of school hours. Students require a reasonable level in GCSE English and maths.

While not mandatory, some theatre production experience in any field would be useful.

Typical Careers

Sound, Costume or Set Designer, Costume Maker, Set Builder, Scenic Artist, Prop Maker, Theatre Technician, Stage Manager, Technical Operators/Programmers

Post 16

Course Information

Production Arts

How Do I Apply?

These are the questions you need to answer when you apply online:

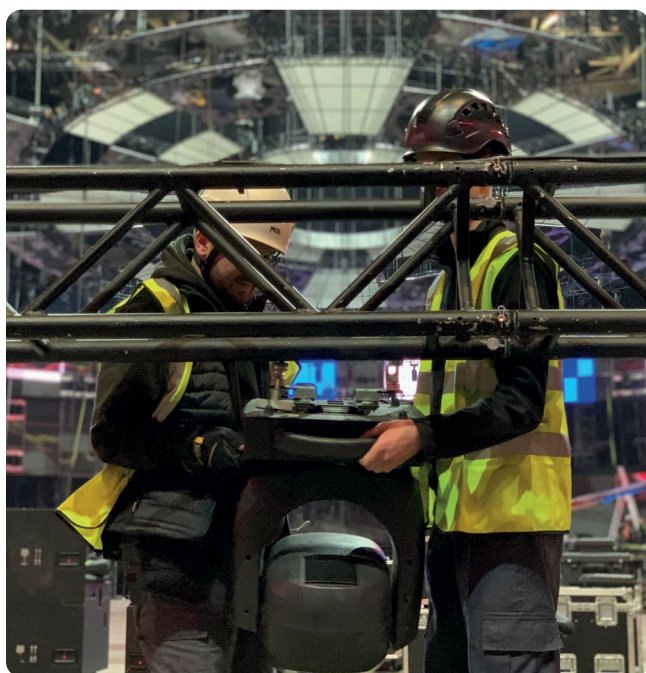
- Think of a live performance you have seen in person or on TV/film. How do you think the lighting, costume, set or sounds made your viewing more enjoyable? What did it add? This could be anything from a live music concert, play or musical or performance.
- What creative activities are you involved in that are related to the course? For instance you may have been involved in a school play, drama club, or play a musical instrument.
- Why do you think you are suited to the Production Arts course?
- What do you think you will bring to the course?

Principal Partner:

Andrew
Lloyd
Webber
Foundation



We are delighted to announce Andrew Lloyd Webber Foundation as the Principal Partner of Production Arts at The BRIT School. As long-term friends of the School, we have a shared commitment to break down barriers to the creative industries for all young people who want the arts in their lives.



"I can honestly say looking back, its the most fun I ever had whilst learning anything. I used to go in on my days off!! I believe it's not only prepared me for university life but also the real world."

Karen Thomas, Graduate of Production Arts Course 2004 works in stage management and props in theatre and film.

Visual Arts & Design and Fashion, Styling & Textiles

CREATIVE
ARTS COURSE



Course Overview

Creative and passionate students are welcomed to the Visual Arts and Design department. You will study traditional and contemporary techniques in visual arts, sculpture, drawing, painting, illustration, community art, textiles, photography, digital design, graphic design, film making and fine art. We now offer a new route at Post 16 exploring Fashion, Styling and Textiles; this covers pattern cutting, design, garment making, finishing, dying, print, embellishment, photography, illustration, editorial and styling. We deliver a vocational qualification that enables students to gain a greater understanding of the creative industries through exciting live briefs with external partners.

Student Experience

Visual Arts and Design has extensive facilities with studios that cater for 2D and 3D work. These facilities range from textiles, screen printing, photography studio/darkroom, and Mac & PC suite for digital manipulation. All projects have a vocational focus that offer opportunities to work with outside agencies as well as other departments within the School on community art projects.

We encourage all students to proactively exhibit their work, both at school and externally. We support the curriculum with enrichment projects, so students have the opportunity to consider their work in a wider professional context. Students can choose from a variety of activities to extend their knowledge and understanding or feed their entrepreneurial spirit.

The School has excellent links with external creative partners, which enables our students the opportunity to work on creative projects outside of the studio environment. Gallery visits are an important part of students' learning and we endeavour to make this a prominent part of the experience.

We have worked with organisations and brands including Alice Made This, Dr Martens, forpeople, The Royal Academy, Royal Bank of Canada, UAL and we offer Host Workshops delivered by our alumni who are working in the industry.

What Qualities Do I Need?

We believe those students who demonstrate an enthusiasm for arts and design and a passion to be a creative thinker, with the ability to overcome boundaries and challenges will be suitable candidates for this course.

Typical Careers:

Styling and Trend Forecaster, Fine Artist, Jewellery Designer, Body and make up Artist, Art Director, Marketing Director, Museum/Gallery Curator, Illustrator, Editor, Product Designer, Interior Designer, Fashion Designer, Photographer, Freelancer in all creative fields, Graphic Designer, Textile Designer, Researcher, Historian

Proud to be Principal Partner of Fashion Styling & Textiles:

BURBERRY

Key Stage 4 Course Information Visual Arts & Design

What Will I Study?

If you join us at age 14 you will learn and develop your knowledge of the basics of drawing, painting, sculpture, photography, animation, fashion, illustration and textiles. As you develop through the course you also have the opportunity to choose a specialism. Once you finish your studies you will achieve a **BTEC Tech Award in Art and Design Practice, equivalent to GCSE 9-4.**

How Do I Apply?

These are the questions you need to answer when you apply online:

- What art and design techniques, equipment and IT have you used in your previous work? Why have you chosen these?
- What motivates you to being creative and working hard?
- Tell us about yourself and your experiences in visual art and design.
- Choose a piece of work by an artist or designer and describe what you think is effective about it.

Post 16 Fashion Styling & Textiles Route

“Our specialist route of Fashion, Styling and Textiles is great for young people who may be currently studying Art & Design or Textiles GCSE or just have a real passion outside of their curriculum for this area of study.”

Alice Everest, Director of Visual Arts and Design



Post 16 Course Information Visual Arts & Design

What Will I Study?

You will develop your techniques in drawing and life drawing, painting, sculpture, printmaking, illustration, web design, textiles, photography, live art, graphics, fashion, film making and many more areas of art. You will achieve a **UAL Level 3 Extended Diploma in Creative Practice: Art, Design and Communication, equivalent to 3 A Levels.**

Route One: Visual Arts & Design

Explores a variety of technical skills within: Fine art (sculpture, painting & drawing), photography/film, print, graphics and illustration.

How Do I Apply?

For Visual Arts & Design Route One applications, please answer the following questions when you apply online:

- What art and design materials and processes have you used in your previous work (this could include digital)? Why have you chosen these?
- Tell us about your previous art and design experiences, in and out of school.
- Which artists, crafts, people or designers have you been inspired by? How have these influenced your work?
- Choose a piece of work by an artist or designer, and describe what you understand about it.

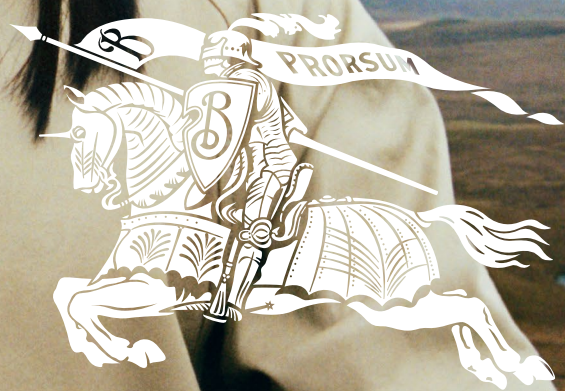
Route Two: Fashion, Styling & Textiles

Explores a variety of technical skills with a fashion focus from: Textiles, pattern cutting, machining, print, photography, styling, fashion illustration, editorial and graphic design.

How Do I Apply?

For Fashion, Styling & Textiles Route Two applications, please answer the following questions when you apply online:

- What sewing and/or textile techniques have you had experience in before? How have you applied these?
- Tell us about your previous fashion and textiles experiences, in and out of school.
- Tell us about your fashion and/or textiles interests and inspirations. How have you incorporated this into your work?
- Choose a historical or contemporary garment, collection or practitioner and describe what their work means to you.



BURBERRY



BRIT KIDS

THE BRIT SCHOOL'S
SATURDAY COURSES
IN CREATIVE, MEDIA
& PERFORMING ARTS
FOR 8-18 YEAR OLDS.

WE HAVE BRANCHES
IN CROYDON AND
CANTERBURY AND
ARE LAUNCHING
KINGS CROSS IN
JANUARY 2024.

WE OFFER HOLIDAY
CLUBS FOR INTENSE,
CREATIVE FUN AT
**BRIT SUMMER AND
BRIT AUTUMN**

APPLY AT
[BRITKIDS.ORG](https://britkids.org)



Applied Theatre

Post 16 only

PERFORMING ARTS COURSE



Course Overview

If you have a passion for performing arts and also want to discover how your skills can play more of a role than just on stage, our Applied Theatre qualification provides you with the practical skills to enrich, inform and transform the lives of others through performance.

As the only Key Stage 5 course in the UK designed specifically to build skills in community arts delivery, you will train in areas such as theatre for change, teaching, facilitation, dance, singing and acting. You will also learn how to use the arts to explore a range of social topics and engage with the community. You will develop your skills as a professional, learning how to communicate and network with a diverse range of external clients and coordinate events.

This unique, creative and energetic course is a great way to develop your creativity, performance and teaching skills as an artist as well as give back to the community.

Available only if you are aged 16 or over, you will achieve a **UAL Level 3 Extended Diploma in Performing Arts** at the end of your course, which is the equivalent to three A Levels.

Proud to be a Lead Partner for

THIS IS CROYDON
LONDON BOROUGH OF CULTURE

Student Experience

The Applied Theatre course works with a range of partners including Crisis, Barnardo's, Age UK and Certitude developing projects both for and with these groups. Each year students work with hundreds of primary school children in the local community and have recently taken part in training to become 'Dementia Friends' in partnership with the Alzheimer's Society. Students have also had the opportunity to deliver performances and workshops in a range of settings including Hyde Park British Summer Time Festival, Croydon Children's Library and Crystal Palace Park's Summer of Play festival.

Students also develop a range of Theatre in Education projects, working with thousands of young people in schools across Croydon using the Performing Arts as a tool to address the issues that are most important to them.

What Qualities Do I Need?

A passion for the arts is vital, as is a keen interest in working with a wide range of people of all ages and backgrounds. You will also need to be highly committed, adaptable, passionate and responsible as this course requires you to work and study outside of school in a range of environments.

Typical Careers:

Arts Learning and Participation Manager, Community Dance Artist & Facilitator, Inclusive Theatre Director, Performing Arts Teacher, Events Coordinator

Post 16 Course Information Applied Theatre

How Do I Apply?

These are the questions you need to answer when you apply online:

- a) Give an example of an activity or project that you were involved in that was carried out as part of a team and that you were particularly proud of.
- b) What do you think makes you a suitable candidate for the course?
- c) How do you think being involved in a performing arts project could enrich the life of someone who has not had the opportunity to be involved in the arts before?
- d) If you could create your own community arts project, what would it be and who would it be aimed at?



What is Applied Theatre?



"This course is about using theatre to create social change. Students develop skills across the performing arts and work with groups across the community including Schools, Care Homes, Pupil Referral Units, adults with learning needs, people living with homelessness.

The multi disciplinary skills you learn on this course can lead to a range of different employment pathways including Performing, Events Management, Youth & Community work, Teaching and various roles in Media. Our Alumni have gone on to study at institutions such as Royal Central School of Speech & Drama, RADA, Rose Bruford College, LIPA and so many more.

We are proud of being the only course run at FE in the country."

Emma Banton
Director of Applied Theatre

Dance

PERFORMING ARTS COURSE



Course Overview

Ballet, jazz, tap, contemporary, street styles – whatever your dance style, you can learn more about it with us. From perfecting your skills in technical training to letting your creativity run wild in choreography and improvisational classes, our dance courses are designed to nurture your existing skills and lead you to experience dance in a way you have never imagined before.

As well as perfecting your technique in the studio, you will also perform regularly in our theatres as well as within the community, through professional visits, theatre trips and workshops.

Student Experience

The six fully equipped dance studios are always bustling with activity, and each of them has hi-fi facilities with iPod connectivity, TV, laptops and projectors, plus mirrors.

You will also take part in show-stopping performances in our two on-site theatres and there is also the opportunity to perform at venues outside of school.

There is a Peri Dance Programme which is available to enhance the Strand offer at a small fee. Bursaries are available, thanks to the support of the Leverhulme Trust. We offer ISDT Examination classes and Open Classes in a range of genres.

Supported by **LEVERHULME TRUST**

What Qualities Do I Need?

You should be passionate about dance and have a talent for it. If you are applying aged 16, it is desirable that you have had previous dance experience. You should also have good time-keeping and have a reliable and determined character.

Typical Careers:

Contemporary Dance Artist
Choreographer
Commercial or Musical Theatre Performer
Teacher/Animateur

Key Stage 4 Course Information Dance

What Will I Study?

You will be studying for the **RSL Level 2 Technical Certificate in Performing Arts, equivalent to one GCSE**, which teaches you more about choreography, performance, technique and the working practices of the performing arts industry. The course is a combination of Internal and external assessed content considered valuable to your developments in the dance field.

How Do I Apply?

These are the questions you need to answer when you apply online:

- a) What and who has inspired you to study dance?
- b) Tell us about your dance training and experience to date.
- c) How do you think this course will help you in your future career?
- d) Describe the skills needed by a dancer to succeed in their career.



Post 16 Course Information Dance

What Will I Study?

You will be working towards the **UAL, Level 3, Extended Diploma in Performing Arts, equivalent to studying for three A Levels**. You will learn a range of dance techniques, performance techniques and the theoretical aspects of the art.

As well as spending time focusing on perfecting your dance abilities you will also learn additional skills in singing, physical theatre and the business side of the industry.

How Do I Apply?

These are the questions you need to answer when you apply online:

- a) What and who has inspired you to study dance?
- b) Tell us about your dance training and experience to date.
- c) How do you think this course will help you in your future career?
- d) Describe the skills needed by a dancer to succeed in their career.



Music & Music Technology

PERFORMING ARTS COURSE



Course Overview

Whether your goal is to be a performer, producer, songwriter or a music business professional, studying at The BRIT School is one of the best ways to prepare yourself for the future. We offer a varied and well-rounded musical training that will stretch and challenge you, as well as provide you with the wide range of skills that you need to succeed in the industry.

Student Experience

The music department benefits from outstanding facilities including professionally equipped rehearsal rooms, recording studios, Mac suites and more. We run software including Pro Tools, Logic Pro and Ableton alongside equipment from Marshall, Fender, Nord and many other industry standard brands.

Music and Music Technology students are offered multiple performance opportunities which include the School's onsite theatre as well as a variety of external venues. Our close relationship with The BRIT Trust and the support of the School's governors often results in students being invited to perform at a range of prestigious events and venues each year.

Typical Careers:

Performing Artist, Producer, Session Musician, Sound Engineer, Songwriter, Music Teacher, Music Business (A&R, Promoter, Publisher etc)

What Qualities Do I Need?

We are looking for imaginative and talented musicians who have an interest in the study of Music and Music Technology as a wider subject (not just performance/production) and have the initiative to create opportunities for themselves and their peers. It is vital that students are already actively involved in music making both in and out of school. We are a wide-ranging department and there is no preference given to particular genres or instruments.

Key Stage 4 Course Information Music

What Will I Study?

The **RSL Level 2 Certificate in Performance for Music Practitioners (equivalent to one GCSE)** will allow you to develop your skills and knowledge in many areas including performance, analysis, theory and production/composition. You will need to be competent on at least one instrument (or voice) to apply. Although we do not offer a separate music technology course for Key Stage 4 strand, we do still encourage applications from those who specialise in this area, as long as they can play an instrument and/or sing to a good standard.

How Do I Apply?

These are the questions you need to answer when you apply online:

- List your practical skills (instruments/voice/production etc.) and give a clear indication of which one you will audition with.
- Describe in detail your musical experience and/or training since you started secondary school.
- How do you think this course will help you to achieve your career goals?
- What are the most important qualities needed to succeed in the music business?



Post 16 Course Information Music & Music Technology

What Will I Study?

At Post 16 we offer two music courses: 'Music Route' and 'Music Technology Route'.

For both routes we offer the **UAL Level 3 Extended Diploma in Music Performance & Production, which is equivalent to three A Levels.**

Both routes will study subjects such as the music industry, music history and theory.

Music Route will additionally include songwriting, solo and ensemble performance, ethnomusicology and music production.

Music Technology Route will additionally include subjects such as recording, DAW production, mixing and DJ skills.

How Do I Apply?

You may apply for one route only.

These are the questions you need to answer when you apply online:

- List your practical skills (instruments/voice/production/software skills etc.) in order of ability and give a clear indication of which one you will audition with.
- Describe in detail your musical experience and/or training since you started secondary school.
- Give an example of an occasion when you have demonstrated professionalism in your own work or study.
- What are the three most important qualities needed to succeed in the music business and why?



Musical Theatre

PERFORMING ARTS COURSE



Course Overview

Whether you join this lively department at aged 14 or 16 you will spend your time improving your technique in singing, dancing and acting skills through hard work and discipline. If you are a versatile and open minded performer then you will fit right into this rigorous and vibrant course.

Student Experience

You will explore a wide range of performing arts work and develop as both an artist and as a person. The course is designed to give equal focus to acting, singing and dance and the development of skills and knowledge in these performance disciplines.

There are a variety of performance opportunities across the course so you can put technique into practise. These include devising, working in the community and public performances of existing and new musical work, all produced to the highest technical standard in the School's theatres and external venues.

Recent productions include: *A Chorus Line*, *Les Misérables*, *Pippin*, *Rent*, *Jesus Christ Superstar*, *Into the Woods*, *Spring Awakening*, *Spamalot* and *Sweeney Todd*.

What Qualities Do I Need?

We welcome students with a wide range of skills and backgrounds, and this creates an environment where our students are encouraged to respect and appreciate differences. The course is very hard work and is likely to be very different to what you have experienced so far in your school life. Students will need to commit wholly to a full timetable, long hours and expect a high degree of intensity within the training.

As a department, we are at the forefront of exploring new writing and will expect you to be open minded in your response to challenging material and repertoire which may push boundaries.

We are looking for potential in all three areas of the performing arts and a 'can do' attitude.

Typical Careers:

Performer
Teacher
Producer - TV or Theatre
Director
Writer
Composer
Choreographer

Key Stage 4 Course Information Musical Theatre

What Will I Study?

You will study for a **RSL Level 2 Technical Certificate in Performing Arts, equivalent to one GCSE**. On the course you will explore a variety of performance styles, with an equal focus on singing, dancing and acting. By the end of the course you will have developed practical and theoretical performance skills that will put you in good stead to continue your study of musical theatre at a higher level.

How Do I Apply?

These are the questions you need to answer when you apply online. You may be asked to record your response and upload the file:

- Why do you feel you are suited to studying Musical Theatre?
- What do you think you will learn about yourself by studying Musical Theatre?
- Which musical would you most like to be in? Which one would you least like to be in? Explain the reasons for your choices.
- What performance have you been involved in that has influenced your decision to study Musical Theatre?



Post 16 Course Information Musical Theatre

What Will I Study?

This course focuses on developing your skills and knowledge in all areas of performing arts and lets you explore new performance techniques. With an equal focus on singing, acting and dancing you will get practical opportunities to practise what you've learnt through performance inside and outside of school.

Once you complete your course you will have achieved a **UAL, Level 3, Extended Diploma in Performing Arts, equivalent to three A Levels**.

How Do I Apply?

These are the questions you need to answer when you apply online. You may be asked to record your response and upload the file:

- What do you think are the five most important attributes of a musical theatre performer?
- With reference to your future aspirations, what are your expectations of the Post 16 Musical Theatre course at The BRIT School?
- What do you feel you contribute to a team? Give an example of your participation in a team event.
- Tell us about a musical theatre composer who you admire. Explain the reasons for your choice.



Theatre

PERFORMING ARTS COURSE



Course Overview

Acting, directing, writing or producing: whatever your passion for theatre, you can learn how to refine your skills on our Theatre course. Not only will you get plenty of opportunities to perform, you will also develop skills as a writer, study contemporary texts and have the opportunity to develop your directing skills.

You will perform in at least eight productions during your time at the School, and you will also get the opportunity to tour outside of the School, work with community groups and attend trips to the theatre.

At the end of your course you will be equipped with the practical skills to join the professional world of theatre or continue your education and training elsewhere.

Student Experience

There are a variety of productions each year presented by the Theatre department, so you will have many opportunities to get involved in a performance.

As well as this, you might just get the opportunity to perform at professional venues such as the Seven Dials Playhouse or New Wimbledon Studio Theatre.

The department's month-long season, Common Ground, showcases a wide genre of plays here at the School. Strawberry Picking, a new writing season, lets you create your own theatre and organise your own performances independently: a creative challenge, but a rewarding one!

What Qualities Do I Need?

You should have a passion for theatre and the arts and have the commitment and the drive to push yourself. You should also feel comfortable working in a team and be keen to pursue a career in the world of theatre.

Typical Careers:

Writer, Producer, Actor, Director, Teacher, Marketing/PR Manager

Key Stage 4 Course Information Theatre

What Will I Study?

If you join us aged 14 you will develop the practical skills for performance including voice and movement. You will have the opportunity to learn how to create your own work through the process of devising theatre as well as perform in scripted plays.

At the end of your studies you will achieve a **RSL Level 2 Technical Certificate in Performing Arts, equivalent to one GCSE.**

How Do I Apply?

These are the questions you need to answer when you apply online:

- What do you think your best performance has been so far and why?
- What do you think is the most effective piece of theatre you have seen and why?
- Why do you think theatre is important?
- What do you think you will learn and what do you hope to achieve by studying this course?



Post 16 Course Information Theatre

What Will I Study?

You will be studying for a **UAL, Level 3, Extended Diploma in Performing and Production Arts, which is equivalent to three A Levels.**

You will study both the theory and practice of a wide range of theatre styles through workshops and productions. From studying important acting techniques and works from pioneers of the theatre industry, to performing in a Shakespeare play and working with community groups, you will get a well-rounded experience of what you can expect from working in theatre professionally.

How Do I Apply?

These are the questions you need to answer when you apply online:

- What was your most recent role? Please name the play, playwright and character you played if relevant. Do you think you were successful, and why?
- What do you think is the most effective piece of theatre you have seen and why?
- What theatre/TV/film performers do you admire and why?
- Why do you think theatre is important? Explain your reasoning through examples of your experience making and seeing theatre performances.



Admissions Policy & Procedure 2024/25



The BRIT School has always been the place to be you, regardless of race, sexuality, gender, disability or any other characteristic.

Today and every day we are united against all forms of prejudice, discrimination and racism.



1) Policy

1A) Admission: practical requirements

- i) Age (all ages are as at 1 September in the year admitted). Students are admitted at:
 - 14 years of age for Year 10/ Key Stage 4 (KS4) (after Key Stage 3 (KS3))
 - 16 years of age for Year 12/Post 16 courses (after KS4/GCSE)
 - Applicants who are younger than this or who are two or more years older cannot be considered. Applicants who are no more than one year older than this (i.e 15 years of age for KS4 or 17 years of age for Post 16) may apply, and should make clear in their application why they are applying out of their expected age group.
 - We do not admit students into Years 11 or 13 or mid-year into any year group. If you are due to begin studying Year 10 in September 2023 you are unable to apply to repeat Year 10 in September 2024.
- ii) Numbers: Allocation of places:
 - Year 10: approximately 200 students - proceeding to Year 11
 - Year 12: approximately 500 students - proceeding to Year 13
- iii) Catchment Area:

The catchment area for The BRIT School is available on our website and referred to on p.42.

The School also has a dispensation to give special consideration to applicants of exceptional merit from outside the catchment area, subject to restricted numbers, providing that they meet the admission criteria 1B) and follow the general guidelines for accommodation (see section 3).

1B) Admission criteria

- i) The School seeks to admit students who:
 - aim for a life in the world of arts, entertainment and communication or related fields
 - demonstrate (with evidence) a commitment to the performing, visual or digital arts and their associated technologies, either in performance itself or in associated activities
 - demonstrate, during the application procedure, a real determination to study, practise and succeed and that they have the drive for the demanding schedule, details of which are set out in each departmental section
 - demonstrate to the teachers they meet or work with during the application procedure that they would benefit from the education The BRIT School offers. The staff they meet will be assessing:
 - the capacity to acquire the necessary skills and to continue to improve;
 - an understanding of the career and further education choices towards which joining the School will lead them;
 - the relevance of the course to their future career plans;
 - a passion for the art form applied for;
 - relevant current and past activities, including in school;
 - levels of concentration and determination.
 - if applying for KS4 can show that they are working with commitment in KS3, and if applying for Post 16 courses, can show that they are working with commitment in KS4
 - if applying for KS4, are considering a four year commitment to study.

NB Passage from KS4 to Post 16 is not automatic.

ii) Equal Opportunities:

The School is committed to equal opportunities and admits students across the full spectrum of academic abilities. The aim is that the School should broadly reflect the community of Greater London. All students have equal access to the curriculum and there is a learning support programme for students with additional learning needs.

iii: Applicants with an EHCP, LAC (CLA), previously LAC or adopted status:

We are committed to meeting every applicant that has EHCP, LAC (CLA), previously LAC or adopted status and to make reasonable adjustments for that applicant, within our admissions process. Please note that a school can only be named in an EHCP or LAC plan if it is a maintained school or if the school has received approval from the Secretary of State under section 41 Children and Families Act. A list of such schools is on the Gov.uk website; The BRIT School is not listed. Therefore, we apply our own admissions policy and are not in the same position as maintained schools.

2) Procedures

2A) What the applicant must do

i) Prospectus and Online Application Form

Students or parents/carers may obtain a prospectus and apply in any of the following ways:

- by reading and downloading via our website, www.brit.croydon.sch.uk and applying online
- by signing up and joining The BRIT School Open Events 2023 (see p.6)
- from careers conventions in their school or neighbouring schools

NOTE: We strongly recommend you attend one of the Open Events and watch the videos on the School's YouTube Channel @britschoolfilms before applying. This will help you understand the way in which the School works.

ii) Specialism

- Applicants must apply for a specific course. All further arrangements in relation to an application will then be based on this initial choice.
- Should a student wish to change their strand application choice, send an email to studentservices@brit.croydon.sch.uk stating their name, the Strand they have applied for, and that they would like the application withdrawn. The student must start the application procedure again and it will be treated as a new application so please ensure that it is received before the deadline date.

- Applicants whose applications are not successful at any stage may not apply for a different course unless specifically recommended by the School in writing.

The deadline dates are:

Year Applying For	Course	Closing Date
Year 12 (Post 16) Performing Arts	Dance, Musical Theatre, Music & Music Technology, Theatre	13 Nov 2023
Year 12 (Post 16) Creative Arts & Applied Theatre	Applied Theatre, Film & Media Production, Interactive Digital Design, Production Arts, Visual Arts & Design & Fashion, Styling & Textiles (We give additional time to these Strands in order that portfolios can be prepared)	22 Jan 2024
Year 10 (Key Stage 4)	All courses	8 Jan 2024

iii) Completing the Form

The online application form will be available from 1st August 2023. Applicants are encouraged to apply well before the deadline dates. Please note that late applications received after the published date will be added to our waiting list. There is no guarantee that these applications will be considered by the Strand director.

Please check these deadline dates carefully; we will not be able to make exceptions if deadlines are missed because the table has not been read correctly.

- Application forms must be completed online in accordance with the instructions.
- When completing the online form the applicant will be asked to upload a copy of their Year 8 or Year 10 (depending on Year applying for) school report, which should include attendance data. The application is considered incomplete and may not be processed until this information is supplied. You may also email a copy of your report to studentservices@brit.croydon.sch.uk
- Applicants who do not submit a complete application in time to be processed by the relevant deadline might find that all places in their chosen specialism have been allocated.

Admissions Policy & Procedure 2024/25

- If, on receipt of a late application, all places in the chosen specialism have been allocated, or it appears from the number of applications already underway that all places are likely to have been allocated by the time these applications have been assessed, the application will be placed on a waiting list without being assessed. If places become available before the start of the academic year, applicants on the waiting list may be invited to continue the procedure as outlined in 2B) and 2C).
- All applications received by the relevant deadline will be dealt with entirely on their merits.

In addition, special consideration can be given to applicants of exceptional merit who are out of catchment area up to a maximum of 10% of the intake; Refer to 3i) for more information.

2B) Procedure following the School's receipt of the application form

- All complete application forms received on time will be reviewed against the criteria in section 1B(i) and applications which do not fulfil these criteria may be unsuccessful at this stage.
- No applicant with an EHCP, who are LAC (CLA), previously LAC nor adopted children will be excluded from the process at this point. This is in recognition that young people in these situations might require additional support in order to present themselves most fully. Having reached the workshop/meeting, where appropriate support will be available, these candidates will be assessed against the published criteria in the same way as other candidates.
- Depending on which specialism has been applied for, students will be invited to participate in workshops or meetings, usually followed by a structured discussion.



- The applicant will be informed of the format at least two weeks before the due date and whether they have to prepare anything or bring anything to the session.
- All applicants for a particular specialism will go through the same procedure (e.g. all Dance applicants will have a workshop, all Visual Arts & Design applicants will submit a selection of work from their portfolio).
- The session, whether it is a workshop or meeting, is intended to be with, and for the benefit of, the applicant. Therefore, parents/carers are requested not to participate. However, parents/carers of KS4 applicants must attend the structured discussion which may follow in case practical issues of travel, accommodation and attendance need to be discussed. Parents/carers of Post 16 applicants are also welcome to attend this structured discussion.
- If an applicant is feeling unwell on the day of the audition/workshop/meeting and decides to attend they will ordinarily be unable to use this subsequently as grounds for a Phase 2 appeal (see p.42). We will always endeavour to reschedule the meeting if an applicant informs us that they are ill on the day, or just before. If an applicant comes to the meeting, they have decided they are well enough to do their best.
- The cycle of workshops/meetings will start in December 2023 and then continue up to the end of March 2024. Additional dates may be added after this, depending upon application numbers.

KS4 workshops and meetings will take place over a fixed three-day period from Wednesday 21st February 2024 to Friday 23rd February 2024. Please bear this in mind when booking holidays. We will be unable to see KS4 applicants at any other time.

The date given for a workshop/meeting cannot be changed unless it is for a previously arranged hospital appointment or public exam (not mock). Please include any dates and supporting documentation concerning unavailability with your application form.

2C) Procedure following workshop/meeting

After each workshop/meeting, decisions are made by a panel of staff, including those who have met the applicant, with a senior curriculum manager. The decision to offer a place is based on the criteria outlined previously; evidence concerning these criteria will include reports and references from current schools. Where there are two stages to the process on the same day with some applicants not progressing to the second stage, unsuccessful applicants will be informed orally at the time, with an email of confirmation within 14 days. In some cases there is a gap of a few weeks between stages; applicants will be informed whether they are to proceed to the second stage by email. All other students will be informed by

email of the outcome as follows:

- an offer of a place, conditional on successful completion of the relevant key stage (see 3 v), OR
- an offer with special medical conditions attached (see 3 v), OR
- a place on the reserve list, OR
- a decision not to offer a place on the course applied for, with a recommendation that the candidate might wish to apply for an alternative course, OR
- a decision not to offer a place.

Brief feedback to assist in understanding the decision can be provided on written request after your application process has been completed. Requests for feedback must be received in writing within 14 days of the decision being communicated to the applicant. As the admissions process may still be ongoing, feedback may take some time and may not be processed until the end of the admission/appeal process. We are unable to provide feedback if it is your intention to apply for a Phase 2 appeal.

NB. We endeavour to email meeting/workshop decisions within four weeks. Those applying for strands with a two round process will have a decision confirmed by email within 14 days of the first round. If you have attended a workshop/meeting, we politely request you do not contact Student Services until after this date.

Please note: all decisions will be communicated via email only. We will not send any information by letter or telephone.

How we will communicate with you:

Please ensure that the email addresses provided are correct. We use this method to communicate with you using the information you provide on your application form. All responses are sent within our published time criteria and the School cannot therefore accept responsibility for any workshops or meetings that are missed due to either incorrect contact information supplied by the applicant/parent/carer or where our correspondence has not been read by the applicant/parent/carer within the published time criteria.

Please ensure you check your junk/spam folders for any communications from us. We cannot accept responsibility for any missed information. Please make @brit.croydon.sch.uk and @applicaa.com a safe sender with your email provider.

2D) Procedure following an offer

When offer emails are sent, applicants are given a date by which acceptance of the place offered must be received by the School. If the applicant fails to accept the place by the due date, it will be assumed that they have refused the place.

3) Further guidelines

i) Out of area

Out of area places are very restricted: the School received 10 out of area applications for each out of area place available at Year 12 last year. Please note that candidates from outside the catchment area need to show exceptional merit to be offered a place; this criterion will be reflected in the decisions made at all stages of the admissions procedure, including the initial assessment of application forms, which would need to demonstrate the candidate's exceptional merit.

ii) Out of area (non UK/EEA National)

The School will accept applications from students who have the legal right to be a resident in the United Kingdom at the start of their study programme.

The UK's new points based immigration system applies and treats EU (other than Irish citizens) and non-EU citizens equally. Students who are nationals of EU (or European Economic Area (EEA)) countries (other than Irish citizens) who enter the UK after 31 December 2020 are not automatically eligible for funding and must be able to demonstrate that they are legally resident in the UK to be funded.

For applicants from outside the EEA, and potentially for those from within the EEA applications will be proceeded with only if it is clear (with evidence) that the parents will be relocating to work in the UK. The evidence required by the student is a United Kingdom's residence permit or the confirmation letter from The Home Office for EU Settlement status if they come from outside of the UK.

In such circumstances, the School will consider when the child is expected to be resident in the UK and whether the parent's application to enter the UK has been or will be successful. In order that places offered are not wasted because they cannot be taken up, the School will not make an offer to any student resident overseas unless they have a right of residence in the UK or it is clear beyond reasonable doubt (e.g. evidenced by way of confirmation from a sponsoring employer) that the parent's application to enter and stay in the UK will be successful. It is the responsibility of parents to check that their children have a right, under their visa entry conditions, to study at a school. To help parents, we recommend they check that they have a right of abode or that the conditions of their immigration status otherwise permit them to access a state-funded school.

<https://www.gov.uk/guidance/schools-admissions-applications-from-overseas-children>

<https://www.gov.uk/right-of-abode>

For child welfare reasons we will not accept applications from children under 16 years old whose parents intend to remain abroad.

We regret we are unable to accept applications for Post 16 studies from students residing in Scotland, Wales, Northern Ireland, The Isle of Man and Channel Islands.

Admissions Policy & Procedure 2024/25

Please note in the event of being offered a place we require proof of eligibility before the start of the course. Failure to provide the required documentation will result in your place being withdrawn.

iii) Issues of Accommodation

The BRIT School is a day school. It is not responsible for the supervision of students outside of school hours. It has a large catchment area and the school day is longer than other schools. Students should preferably live within approximately one hour's travelling distance from the School.

- KS4 students should not move away from home to achieve a one hour travelling time, except when accommodation can be found with close relatives, who must then take on the day-to-day support of the student at the School.
- Post 16 students may live away from home whilst studying if necessary, but parents must take responsibility for their accommodation being satisfactory, and make sure that the day-to-day support for the student is in place.

iv) Terms

The BRIT School year consists of five terms of approximately eight weeks, so BRIT School holidays do not always coincide with other institutions. The BRIT School does not give permission for BRIT School students to take vacations during term time.

v) Offers of Places

- Offers of places at The BRIT School are made during the preceding academic year. Therefore, it is important that the applicant, having been offered a place, does not drop their current standards of work and commitment in their current school.
- Offers of places at The BRIT School are contingent on the previous Key Stage having been successfully completed: i.e. in the case of KS4 applicants, KS3 must be completed; in the case of Post 16 applicants (including BRIT School internal applicants) KS4 must be completed to a satisfactory standard.
- If there is doubt as to the student's medical capacity to undertake a course, an offer may be contingent on the results of a medical assessment.

Conclusion of Further Guidelines

It is essential that the above guidelines are understood and acted upon to enable the student to concentrate on their studies. Failure to do so could result in a student not being admitted to the School.

The School's authorised catchment area is all of Greater London EXCEPT: Postal districts CM13 & 14; EN 4 - 8; HA1 - 8; KT8, RM 1 - 7, 11, 12, 14, 15; UB8 - 10; WD2, 3 & 6.

In addition the following postal districts are included:

BR6 & 8; CR0, 2, 3, 5, 6; DA1, 2, 4, 5, 9, 10, 14; KT4, 6, 9, 17-21; RH1, 2, 6 - 11; SM2, 3 & 7; TN13, 14, 16; E18 & E20.

A full list of inclusive postcodes can be downloaded from www.brit.croydon.sch.uk

In addition, special consideration can be given to applicants of exceptional merit who are out of catchment area up to a maximum of 10% of the intake; Refer to 3i) for more information.

Admissions Appeals Policy

The objectives of the Admissions Appeals Policy and Procedure are to ensure that: the School's admissions appeals procedures are clear throughout the process of admissions, the proper procedures are followed.

There are three situations in which an appeal can be made against a decision made by the School:

- An appeal against a decision not to be invited for an initial workshop and meeting ("a Phase 1 appeal")
- An applicant seeking a second opportunity for a meeting/workshop following a decision not to offer a place, or a place with special conditions, or a place on the Reserve list after the first meeting/workshop ("a Phase 2 appeal")
- A final appeal to Governors after the Phase 2 appeal meeting/workshop phase has been completed ("a Final appeal")

Phase 1 appeal:

If an applicant appeals against a decision not to be invited for an initial workshop and meeting, their application form will be reviewed by a member of the Senior Leadership Team who will either confirm the original decision or move the application to the next stage. Appeals must be received, using an online form (the link can be found on our website) within 14 days of the date of the decision being communicated. We are unable to provide written feedback for these applications.

Phase 2 appeal:

If, after the first meeting/workshop, an applicant is not offered a place, or a place with special conditions, or a place on the Reserve list, the applicant may seek a second opportunity for a meeting/workshop through a Phase 2 appeal, (the link will be available on your Application Account) within 14 days of the date of the decision documentation.

To be clear, we are unable to accept verbal, emailed or written requests for appeals. The applicant must refer to the admissions criteria 1B) and should clearly explain why they were unable to demonstrate the criteria on the day, and why they feel the Phase 2 appeal should be allowed.

Please note that we fully understand that the admissions

process and meeting can be nerve-racking and that we will always try to put the applicant at ease when meeting them. Nerves will be taken into consideration for every applicant; therefore, nerves are not grounds for requesting a Phase 2 appeal.

Phase 2 appeals will not ordinarily be allowed on the basis that the applicant felt unwell on the day of the first meeting/workshop. An applicant who feels unwell should ask that the meeting/workshop be rescheduled.

Please note we are unable to provide feedback on the first meeting/workshop if you wish to appeal.

Please note that the School rigorously quality-assures the Phase 2 appeal process so that all panels will be working to the same standards and criteria, both on the day of the first meeting/workshop and at any Phase 2 appeal meeting.

Phase 2 appeal meeting/workshops are conducted by a teacher from the relevant department and a senior member of staff.

During all meeting/workshops, the school will use its professional judgement of applicants, based on the criteria laid out in the admissions policy.

Phase 2 appeal meetings, in accordance with our admissions policy, will still be assessed by the same standards and criteria as the first meeting. For the avoidance of doubt, we will not consider any appeal which is based on a different format being used for the second chance process to that used during the first stage.

Please note that candidates from outside the catchment area need to show exceptional merit to be offered a place; this criterion will be reflected in the decisions made at all stages of the admissions and appeals procedure. Therefore, being out-of-area does not constitute appropriate grounds for appeal.

The date given for a Phase 2 appeal workshop/meeting cannot be changed unless it is for a previously arranged hospital appointment or public exam (not mocks).

You must be prompt for this meeting as we are unable to reschedule if you miss the allocated time slot.

Final appeal:

If, after the Phase 2 appeal workshop/meeting, an applicant is not offered a place or a place with the special conditions referred to in the Further Guidelines of the Admission Policy, an appeal under the Final appeal stage of the appeals process may be made.

A Final appeal may only be made on the grounds that the school has not followed its own admissions procedure. This is referred to as the "Permitted Grounds".

Any appeal not made on Permitted Grounds will not be allowed to proceed. It is therefore very important that the form requesting a Final appeal must state clearly

how the school has not followed its own procedure in reaching a decision not to admit an applicant.

A Final appeal must be made in writing to the Chair of Governors by using the on-line form (link will be supplied in Phase 2 appeal decision email) to arrive at the School within 14 days of the decision being communicated to the applicant.

In the case of Key Stage 4 applicants, the parent/carer must complete the form. In the case of Post 16 applicants, either the applicant or their parent/carer may complete the form. You must state clearly the grounds for appeal in the relevant section on the form. You will receive an email confirmation of receipt.

If the Chair of Governors considers that the appeal is made on Permitted Grounds, it will be considered by an appeals panel.

An appeals panel consists of three people, including a chair who is independent of the School, supported by a clerk who is also independent of the School.

The appellant and School will both be required to submit evidence by a set date ahead of the meeting, and the panel may restrict the addition of further evidence after this date.

The panel may undertake such enquiry into the matter as it considers appropriate and necessary to reach a determination.

The panel also may choose to invite the appellant and/or parent/carer to a meeting if this is considered necessary to better understand the grounds for the request or because the panel wishes to ask questions of the appellant or parent/carer.

After careful consideration of the request for a review and any representations made by the appellant, parent/carer and the School, the panel will conclude by:

- upholding the original decision not to offer the applicant a place; or provided that there is sufficient evidence before the panel that the applicant meets the required artistic standard, determine that the appellant should be
- offered a place [although please note that the appeal panel will not introduce its own tests to assess artistic suitability]
- referring to the application for admission back to the School to be considered afresh.

The decision of the panel, which is final, will be communicated via email. There will be no further right of appeal at this point.

Photographic contributions made by BRIT students and staff

With special credit to: Fiona Whyte fionawhytephotography.co.uk, Ian Hippolyte @ianhippo John.Marshall.jmenternational.com

BRIT Transforms

To find out more about the impact of The BRIT School over the past three decades, please see our BRIT Transforms Revue report.



"It's a school where people from all backgrounds can go and its especially beneficial for people who wouldn't be able to afford a performing arts schools otherwise, people like myself, coming from financially poorer working class backgrounds.

The school has served as the inspiring early environment of so many talented people, the BRIT School Alumni are achieving and making strides in all aspects of the entertainment industry, all over the world, from grass roots all the way to the highest levels.

It's important for me to give back to the school which has helped so many of us on our journey."

Theatre Graduate Ashley 'Bashy' Thomas
#AlwaysBRIT

Thank You

To every person, company and organisation who supports The BRIT School, **THANK YOU!** Without you, none of this would be possible. Your generosity allows us to continue to transform the lives of young artists, regardless of their background. **#BRITTransforms**



Andrew
Lloyd Webber
Foundation



Supported using public funding by
**ARTS COUNCIL
ENGLAND**



THE BOLTINI TRUST

BURBERRY

CROYDON
www.croydon.gov.uk



EON
PRODUCTIONS

ENDEAVOR FOUNDATION



FOYLE FOUNDATION

LEVERHULME
TRUST



T H E
MACKINTOSH
FOUNDATION



Royal Bank
of Canada



simons muirhead burton

THE
OTHER
SONGS

UF
THE UTLEY
FOUNDATION



the
wigg!n
charitable
foundation

The Wolfson*
Foundation

With special
thanks to:



THE BRIT TRUST
Supporting young people in music and education

Support our work

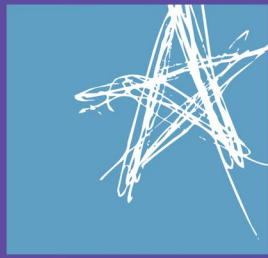
Please support our 'BRIT Transforms Campaign' and help keep BRIT special for future generations of young artists. **#BRITTransforms**

For more information, please visit: brit.croydon.sch.uk/support

To contact our Development Team, please email **Jon Pelluet** (Director of Development) on jpelluet@brit.croydon.sch.uk

To donate now, please scan or click on the QR code:



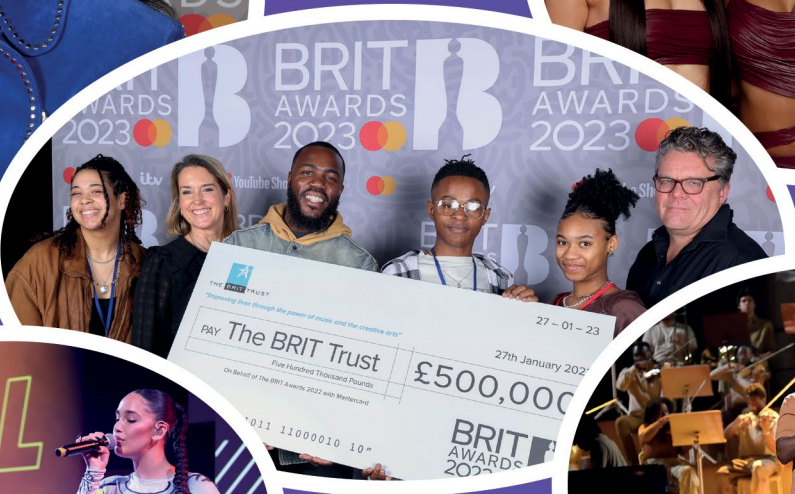


THE BRIT TRUST

IMPROVING LIVES THROUGH THE POWER OF MUSIC AND THE CREATIVE ARTS.

THE BRIT TRUST PARTNERED WITH THE UK GOVERNMENT TO FOUND THE BRIT SCHOOL IN 1991 - THE FIRST PERFORMING ARTS SCHOOL IN ITS TIME TO BE FREE TO 14-19 YEAR OLDS.

SINCE ITS CREATION IN 1989, THE TRUST HAS DONATED OVER £28M TO A RANGE OF CHARITABLE CAUSES AROUND THE UK, INCLUDING THE SCHOOL.



BRITTRUST.CO.UK
BPI.CO.UK

bpi 50 YEARS OF
PROMOTING
BRITISH MUSIC

BRIT
AWARDS
2023

Photos: JM Enternational